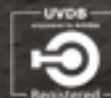




Holemasters is a leading nationwide specialist in concrete drilling and sawing, hydraulic crunching and bursting, breaking and controlled demolition to both the construction and civil engineering industries.

HEAD OFFICE – BLACKPOOL 01253 892890
CUMBRIAN – CUMBRIA 01946 841704
NORTHERN – BOLTON 01942 840600
YORKSHIRE – ROTHERHAM 01709 522666
MIDLANDS – REDDITCH 01527 63623
SOUTHERN DEPOT – ENFIELD 0208 4430000

www.holemasters.co.uk



ABOUT HOLEMASTERS DEMTECH LIMITED

Holemasters is a leading nationwide specialist in concrete drilling and sawing, hydraulic crunching and bursting, breaking and controlled demolition to both the construction and civil engineering industries.

We are proud to be one of the longest established names within the diamond drilling, concrete cutting and robotic demolition industry. We pride ourselves in the expert application of diamond drilling, concrete cutting, controlled demolition, piling and repair technologies and can work with every type of construction material. This expertise has seen the company achieve continuous growth throughout the past three decades.

We are able to handle projects for many of the largest blue-chip organisations in the UK, working out of five locations in the South East, Midlands and the North. With our own flexible and bespoke range of equipment, we are able to provide an exceptional service which is delivered by a team of technical experts and currently boasts over 60 fully trained and certified operators.

We are proud to be part of an exclusive group of contractors that have been entrusted to work within the nuclear demolition industry with a dedicated Sellafield workforce.

Holemasters are also unique in the fact that we are the only UK approved company supplying and fitting rail track anchors. Our expertise has been utilised to develop bespoke equipment resulting in time saved during drilling operations whilst ensuring we deliver projects safely, on time and on budget.





Diamond Drilling & Sawing

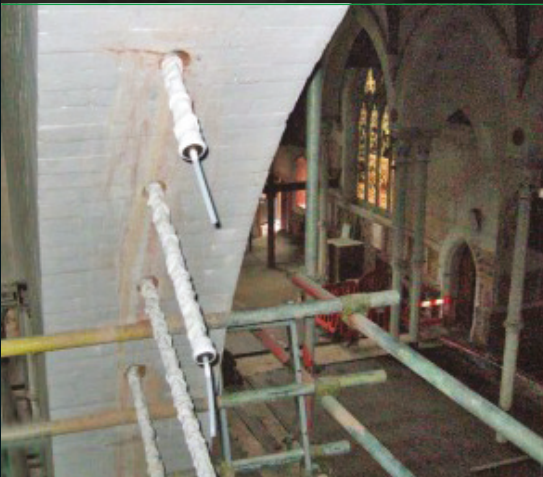
As members of the DSA, Holemasters are committed to the highest standards of safety and working standards in diamond drilling and sawing. We have the capability to diamond core drill holes ranging from 7mm up to 1500mm diameter. Larger diameter holes are also achievable through stitch drilling or wire sawing techniques. Diamond drilling is most often used for works such as forming holes for M&E services for both new build and refurbishment projects. Diamond sawing is also another fast and efficient technique that is used for heavy duty concrete sawing projects such as creating openings in concrete slabs, walls for windows or doorways, motorway construction, bridges, drainage ducts and many more applications where fast cutting speeds are required.



Robotic Demolition

Holemasters operates a range of robotic demolition machines. These are all electric powered and can therefore be used inside buildings without creating fumes. Other than noise caused by the actual breaking or crunching process, the main noise is considerably less than that made by conventional machines. Being remotely operated, the operator can stand in a position of safety and have a clearer view of the work in progress.

These robotic machines can be fitted with hydraulic breakers, cruncher jaws and many other attachments. Within structural limitations, they can be tracked up and down staircases to allow access throughout buildings, and for their weight are far more productive than conventional diesel-powered excavators.



Anchor Installation & Testing

At Holemasters, we have dedicated teams who are involved with remedial repairs. Our operatives are fully trained and certified by the manufacturers of the following products:

Cintec anchor systems – A versatile method of structural reinforcement tailored to meet specific strengthening and repair.

Duckbill ground anchors – For slope stabilisation, retaining walls, ground works, temporary structure and structural repair, reinforcement and stabilisation of building and masonry.

General purpose anchors & fixings – In addition to the above, Holemasters' operators are trained in the installation of general purpose anchors and fixings using various resins from a number of manufacturers.



Pull Testing Service

Performed to establish the strength of new and existing anchors & fixings. There are many factors that can affect the strength and durability of eye bolts, anchor bolts, stud anchors and resin bolts. This service enables early diagnosis of potential strength problems or fixing failure. It is vital to assess the safety of fixings, in particular those which are load bearing or have a high safety element, such as rail anchors and anchors for overhead gantries or signs. Our hydraulic testing equipment can exert a load of up to 320 kN.

OUR SERVICES



Piling and Chance Piling Services

Holemasters is a licensed installer of the chance screw piling system. We have dedicated teams who are fully trained and certified by the manufacturer.

Chance helical pulldown micro pile – Depending on the application this micro pile can be used to rectify subsiding foundations and walls, the jacking of foundations, new foundations, soil nailing and tie back anchors, environmentally sensitive areas for walk way supports and structures.

The chance system has the advantage of being a lightweight system which requires no heavy plant to install and creates minimal debris to be removed.

It is ideal for domestic property gantries and we can also offer a design service.



Concrete Repair and Structure

We have dedicated teams who are involved with remedial repairs. The teams are fully trained by the manufacturers of the following products:

Rapid set materials – Advanced, high performance, hydraulic cement that provides structural strength in one hour. Non-shrink, and superior resistance to chemical attack.

Cement All – A multipurpose, high strength non-shrink grout. This can be used for doweling and anchoring, industrial grouting and road work repairs.

Mortar Mix – A versatile product that can be used for general concrete repair, mortar beds, underlayment and formed works.

Helical Systems – Helical stainless-steel reinforcing and ties to repair distressed masonry.



Rail Anchor, Drilling & Cutting

Holemasters has Link-Up core audit approved status as a rail contractor, and works regularly as sub-contractors to companies such as Story Contracting, Carillion, Stobart Rail, J Murphy & Son and direct to Network Rail. This can be for rail anchor installations, as well as drilling and cutting operations on bridges, tunnels, platforms and stations.

Holemasters has dedicated teams to undertake remedial works on rail housings including fastclips on G44 sleepers and vossloh housings, among others. Our expertise has also been utilised to develop bespoke equipment resulting in time saved drilling operations with additional health and safety benefits.



(See imagery above) Holemasters undertook one of its most ambitious wiresawing projects to date where we were contracted to slice up an old German U boat, nemesis of allied ships during world war II.

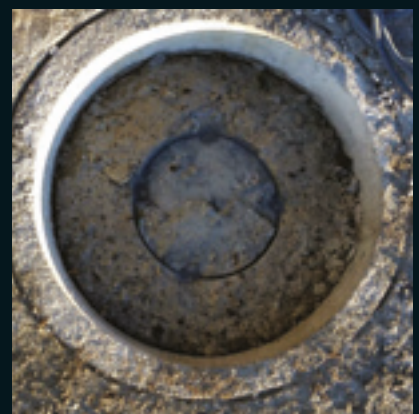
Holemasters have long been involved with a number of Nuclear projects across England, Scotland and Wales and are part of an exclusive group of contractors that have been entrusted to work in the nuclear demolition industry. As a company we have the capabilities to offer technical solutions such as wet or dry wire sawing, diamond wall shaving and cutting operations on both active and non-active power stations.

Our expertise has proven invaluable in providing cost effective solutions for the nuclear industry using a range of remote operations. Our work scope has increased dramatically with the introduction of decommissioning projects. This has seen the launch of Demtech Nuclear Services which was awarded ISO 9001 certification in 2007.

Demtech Nuclear Services' depot has a work force permanently employed at Sellafield working directly for Sellafield Ltd. The company also sub-contract to Sir Robert McAlpine, Amec, BAM Nuttal, Nexia Solutions, Cavendish Nuclear, Shepley Engineering, Stobbarts, Hold Engineering, Jordans and many more.

In addition, Holemasters have operatives cleared and inducted on several UK nuclear power stations/facilities.

Notably Demtech Nuclear Services completed its largest contract to date at Sellafield, which involved the partial demolition of the B6 chimney at Sellafield for Doosan Power Systems.



HOLEMASTERS OWN A LARGE RANGE OF BROKK ROBOTIC DEMOLITION MACHINES

BROKK



Brokk 40

- > Easy to transport.
- > Ideal for breaking screed.
- > 32amp 3 phase supply.



Brokk 160

- > Over 410 joules at the tip.
- > State of the art digital remote.
- > 63amp 3 phase supply.



Brokk 50

- > SB52 hammer.
- > 6 times more efficient than handheld equipment.
- > Can be transported in elevators.



Brokk 180

- > Remarkable hitting power and stability.
- > Has track-widening kit.
- > Small size and great strength.



Brokk 60

- > Easy access through small doorways.
- > Ideal for indoor and weak floors.
- > 32amp 3 phase supply.



Brokk 280

- > Outstanding all round demolition versatility.
- > New intelligent electrical system.
- > Rugged and robust.



Brokk 90

- > One of the most versatile machines available.
- > Folds into a compact package.
- > Perfect for jobs in the metal processing industry.



Brokk 330

- > Outperforms conventional excavators.
- > Impressive power to weight ratio.
- > 63amp 3 phase supply.



Brokk 100

- > Unparalleled stability.
- > Can be transported in a van.
- > Ideal for restricted places.



Brokk 400

- > Reaches almost 7 metres.
- > Can handle attachments up to 600kg.
- > Productive in open spaces.



Brokk 110

- > New smart power.
- > 50% more power than a Brokk 90.
- > Unparalleled stability.



Brokk 800

- > Reaches up to 10 metres.
- > Can handle attachments upto 1200kg.
- > Twice the breaking power of a Brokk 400.

Husqvarna



DXR140

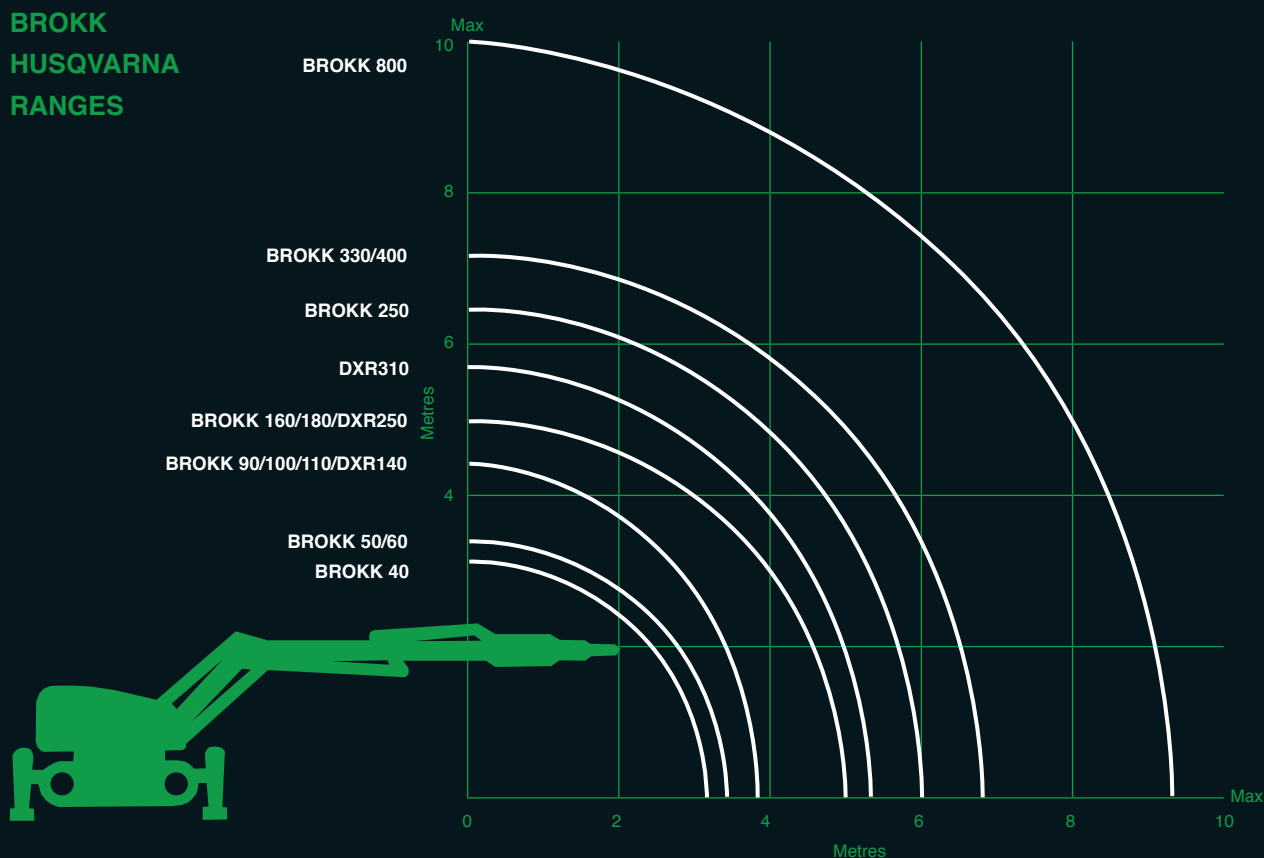
- > Smallest, lightest member of the robots.
- > Operates in cramped spaces.
- > 15kw output.



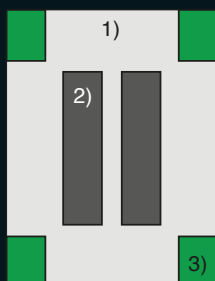
DXR250

- > Works off bluetooth or cable.
- > Takes a SB202 hammer.
- > Up to 100 metre range.

BROKK HUSQVARNA RANGES



FLOOR CAPACITY LOAD



- 1) Machine weight including standard hammer divided by area enclosed by outrigger support points.
- 2) Machine weight including standard hammer divided by track contact surface.
- 3) Max point load measured at tip over load.

	Propagated load (kg/m ² 1)	Load from tracks (kg/m ² 2)	Max. point load from outriggers (kg) 3)
Brokk 40	650	2100	750
Brokk 50	356	2806	795
Brokk 90	422	3313	1019
Brokk 100	437	3434	1432
Brokk 110	437	3434	1432
Brokk 160	458	3894	1998
Brokk 180 flaps	605	4809	3007
B180 dozer	942	4596	2731
B180 long	667	4596	3007
Brokk 260	644	4335	4313
Brokk 330E	718	5389	4913
Brokk 400	773	5944	8418
Brokk 800	1080	7129	20171

Note: all values are static loads - numbers are subject to change without notice. Please consult with the engineer at the site - Holemasters assumes no liability for accidents.




BROKK COMPARISON CHART



www.holemasters.co.uk
Call 01253 892890

BROKK		Weight	Width min	Height min	Motor output	Recommended max weight attachment	Vertical reach (incl. breaker)	Horizontal reach (incl. breaker)
Brokk 40		384 kg (846 lbs)	600 mm (23.6 in)	940 mm (37 in)	0-4 kW	50 kg (110 lbs)	2.9 m (9.51 ft)	2.3 m (7.5 ft)
Brokk 50		500 kg (1102 lbs)	590 mm (23.2 in)	940 mm (37 in)	0-5.5 kW	70 kg (154 lbs)	3.1 m (10.2 ft)	2.5 m (8.2 ft)
Brokk 60		500 kg (1102 lbs)	590 mm (23.2 in)	874 mm (34.4 in)	0-6 kW	80 kg (176 lbs)	3.1 m (10.2 ft)	2.5 m (8.2 ft)
Brokk 90		980 kg (2160 lbs)	780 mm (30.7 in)	1210 mm (47.6 in)	0-11 kW	150 kg (331 lbs)	4.3 m (14.1 ft)	3.7 m (12.1 ft)
Brokk 100		990 kg (2183 lbs)	780 mm (30.7 in)	1147 mm (45.2 in)	0-15 kW	150 kg (331 lbs)	4.3 m (14.1 ft)	3.7 m (12.1 ft)
Brokk 110		990 kg (2183 lbs)	780 mm (30.7 in)	1147 mm (45.2 in)	0-15 kW	150 kg (331 lbs)	4.3 m (14.1 ft)	3.7 m (12.1 ft)
Brokk 160		1600 kg (3527 lbs)	780 mm (30.7 in)	1254 mm (49.4 in)	0-18 kW	270 kg (595 lbs)	4.8 m (15.7 ft)	4.4 m (14.4 ft)
Brokk 180		1930 kg (4255 lbs)	1100 mm (43.3 in)	1392 mm (54.8 in)	0-18.5 kW	270 kg (595 lbs)	4.9 m (16.1 ft)	4.5 m (14.8 ft)
Brokk 280		3150 kg (6945 lbs)	1200 mm (47.2 in)	1530 mm (60.2 in)	0-22 kW	420 kg (926 lbs)	6.2 m (20.3 ft)	5.8 m (19 ft)
Brokk 330		4500 kg (9921 lbs)	1500 mm (59.1 in)	1660 mm (65.4 in)	0-30 kW	550 kg (1213 lbs)	6.4 m (21 ft)	6.8 m (22.3 ft)
Brokk 400		5100 kg (11244 lbs)	1600 mm (63 in)	1792 mm (70.6 in)	0-36 kW	600 kg (1323 lbs)	7.1 m (23.3 ft)	6.7 m (22 ft)
Brokk 800		11050 kg (24361 lbs)	2200 mm (87 in)	2650 mm (104 in)	0-45 kW	1200 kg (2646 lbs)	9.6 m (31.4 ft)	10 m (32.8 ft)

HUSQVARNA COMPARISON CHART

 Husqvarna		Weight	Width min	Height min	Motor output	Recommended max weight attachment	Vertical reach (incl. breaker)	Horizontal reach (incl. breaker)
DXR 140		985 kg	771 mm	854 mm	15 kW	150 kg	4.4 m	3.7 m
DXR250		1620 kg	780 mm	1422 mm	18 kW	230 kg	4.7 m	4.3 m

Acoustic Screening Barriers - Noise barriers for construction sites, music venues and sites that simply need to block sound fast and efficiently

The Acoustic Screening barrier has been produced by using state of the art technology that involves using PVC density and balanced weight. One thing about the barrier is that it is hand-stitched which ensures that maximum strength is retained. Part of the patented technology encompasses using a lining that is waterproof on the reverse of the barrier. This is a powerful invention and our bespoke foam interior will ensure the acoustic barrier does not deteriorate whilst undergoing ageing and general wear and tear. This is very important and necessary especially where the barrier is being used on construction sites or exposed to extreme weather conditions when wearing is prone to happen. This product is a leading noise reduction tool that is immensely efficient and used throughout the world.

What are the benefits of our noise barriers?

Our noise barriers are specifically designed to ensure that there is a significant reduction in the noise levels and your working hours are extended so that you are able to meet your deadlines.

For full specifications and to find out more:

Call 020 8254 5256 or visit www.acousticscreening.co.uk



Perfect for: CONSTRUCTION SITES MUSIC VENUES ARENAS RAIL WORKS

www.acousticscreening.co.uk



HOLEMASTERS ACCREDITATIONS



RISQS - 5 Star Rating

The Railway Industry Supplier Qualification Scheme (RISQS) is the supplier pre-qualification service used by buyers of all products and services throughout the GB rail industry.



UVDB Verify - Category B2 Compliant

UVDB is the supplier management community for the UK utilities industry assessing for Health, Safety, Environmental and Quality standards.



CHAS - Accredited

Assesses suppliers health, safety and environmental competence through desktop assessments.



Building Confidence - 5 Star Rating

Building Confidence is a supplier pre-qualification service used by buyers of products and services throughout the GB construction industry.



RoSPA - Member

The Royal Society for the Prevention of Accidents (RoSPA) has been instrumental in shaping our society for the better, preventing deaths and serious injuries along the way.



ISO 9001:2008 - Accredited

Our Quality Management System is annually audited to the ISO9001:2008 standard via a UKAS accreditation body.



ISO 14001:2004 - Accredited

ISO 14001 gives us the ability to manage environmental risks across the organization and the implementation of ISO 14001 also keeps us aiming at improving the environment.



Approved tester - The Construction Fixings Association

The Construction Fixings Association was established in 1979. The CFA is a Trade Association comprising major manufacturers of construction fixings with a significant UK presence.

We are aware that every work site has differing restrictions and conditions, therefore we have a range of equipment that will fit every sites need such as electric, diesel or hydraulic powered equipment. We also recognise that noise levels can be a problem, with this in mind we have equipment that works at different noise levels to complete the task with limited disruption.

Waste created by some processes also creates issues in certain circumstances. We are therefore capable of controlling these waste products or can offer other solutions to suit most constraints.

Health & Safety

Holemasters operates within the health and safety legislation and the guidelines laid out by the DSA (Drilling and Sawing Association) of which we are a proud member. We employ a large technical team, supporting over 60 trained operators, all of which are fully trained to NVQ level 2 standard and are CSCS certified in drilling, sawing and remote brock demolition operations. Some are further qualified for confined space projects; classified for radiological works; personal track safety (PTS) for rail; IPAF for mobile elevating work platforms; PASMA for tower scaffolds. Health and safety is of highest priority on any project undertaken, which is demonstrated in our excellent safety record.

Vibration Risk Assessment

There is a legal requirement across the construction and civil engineering industry to recognize and prevent vibration exposure.

Vibration White Finger (VWF), also known as Hand Arm Vibration Syndrome (HAVS) can lead to pain and long-term damage to hands and muscles.

All our operatives are trained to ensure they minimise exposure to the potential problem and follow the stringent procedures we have in place.

By using remotely controlled machinery the risk is eliminated. This means that the operative can operate the machine at a safe distance, but it also enables us to work in smaller confined spaces, offering more flexibility in the project.



Excellent safety record • Cost effective & reliable service • Fully trained operators • Nuclear & rail qualified operators

At Holemasters Demtech Ltd we aim to provide a professional service that is second to none. Our company is driven by the needs of our clients and people. We are motivated with a passion to deliver excellence through our knowledge and expertise. Should you require any of our services on any current or future projects please feel free to get in contact with our friendly team who will be happy to assist with any queries you may have.



HEAD OFFICE

Suite 14 | Blackpool Technology Management Centre | Faraday Way | Blackpool | FY2 0JW

T 01253 892890 **F** 01253 892891 **E** s.neck@holemasters.co.uk

NORTHERN DEPOT

Units 2-4 Dixon Street | Westhoughton | Bolton | BL5 3PX

T 01942 840600 **F** 01942 840700 **E** andy.h@holemasters.co.ukk

CUMBRIAN DEPOT

Unit 27 | Energy Coast Business Park | Haile | Egremont | Cumbria | CA22 2NH

T 01946 841704 **F** 01946 841444 **E** t.mason@holemasters.co.uk

YORKSHIRE DEPOT

Unit 3, Park Gate Court | Gateway Industrial Estate | Rotherham | South Yorkshire | S62 6JL

T 01709 522 666 **F** 01709 719 9611 **E** p.wilkes@holemasters.co.uk

MIDLANDS DEPOT

38 Walkers Road | North Moons Moat | Redditch | Worcestershire | B98 9HD

T 01527 63623 **F** 01527 61422 **E** andrew.payne@holemasters.co.uk

LONDON DEPOT

9 Watermill Business Centre | Edison Road | Enfield | EN3 7XF

T 020 8443 0000 **F** 020 8443 2100 **E** a.hayes@holemasters.co.uk

